

Q-FIN

Deburring, grinding and rounding



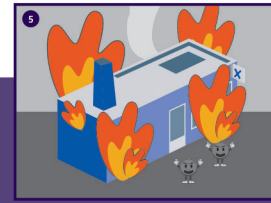
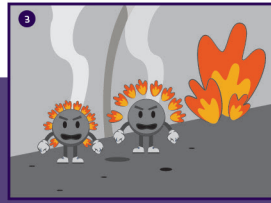
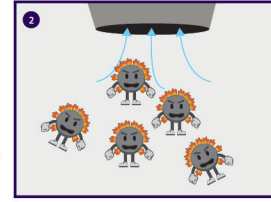
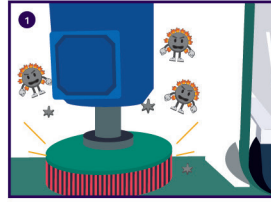
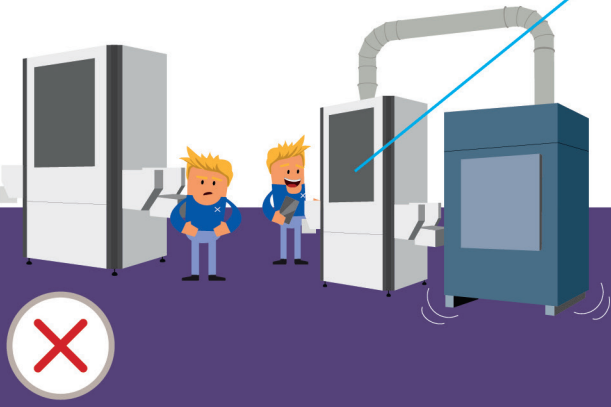
EXTRACTION SYSTEM WET FILTER

The extraction systems from Q-fin are wet working machines that extract dust from stainless steel, steel in combination with explosive aluminum and magnesium dust.

Q-fin. Deburring, grinding and rounding

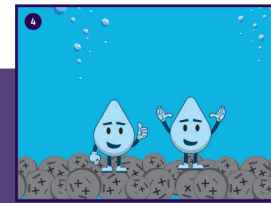
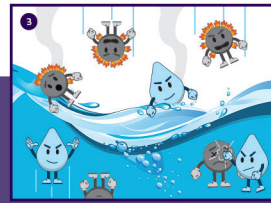
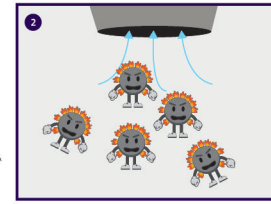
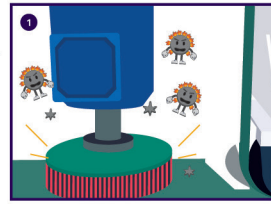
Purchase deburring system while maintaining the existing extraction system.

Let's get to work!



Purchase deburring system with an extraction system wet filter.

Let's get to work!



EXTRACTION SYSTEM AND WET FILTER

DESCRIPTION

The extracted dust is pulled through water with force. Subsequently, the dust is encapsulated in water and then separated from the supplied air. The dust is absorbed by the water and sinks to the bottom of the wet filter. There it ends up in collectors. The metal dust stays under water, preventing explosive gasses from forming. This type of extraction system is also suitable for sticky materials and materials that spark when treated. Fire hazards are precluded when using a wet filter.

TECHNICAL SPECIFICATIONS

- Fully manufactured with stainless steel.
- Maintenance friendly and low TCO.
- No more clogged filters or filter backorders.
- Typically equipped with a sound absorber.

- Collectors for easy cleaning.
- Available in three versions: 3kW | 7.5kW | 15kW.

3KW EXTRACTOR

The 3kW extraction system typically features a mechanical float valve managing the water volume and levels. An electronically controlled system is optional for the 3kW extractor. The 7.5kW and 15kW extractors are by default equipped with an electronic water filling and water level management system.

Q-fin. Deburring, grinding and rounding